

bullfrog[®]
spas



A MORE PEACEFUL LIFE

We all need an occasional escape, a way to relieve our aches, the chance to renew special connections. We need more peace — peaceful bodies, peaceful minds, and peaceful homes. It seems simple, but it's reality, a few minutes in your Bullfrog Spa can make your life a little more peaceful, each day.

While we're similar in many ways, we're also unique in how we define and find our peace. You are uniquely you. That's why Bullfrog Spas offers the only truly customizable, personalized spa available. Bullfrog Spas' patented JetPak Therapy System™ allows you to choose your layout and the massages that work for you, which you can then interchange at any time. It's an ingeniously simple design that provides unmatched reliability, efficiency, quality and peace of mind.

Discover how your new Bullfrog Spa will create a more peaceful life.



PEACEFUL BODY

It's a fact, regular exercise and physical activity is necessary to maintain a healthy body. Nothing supports your health and fitness goals better than a Bullfrog Spa, personalized just for you.

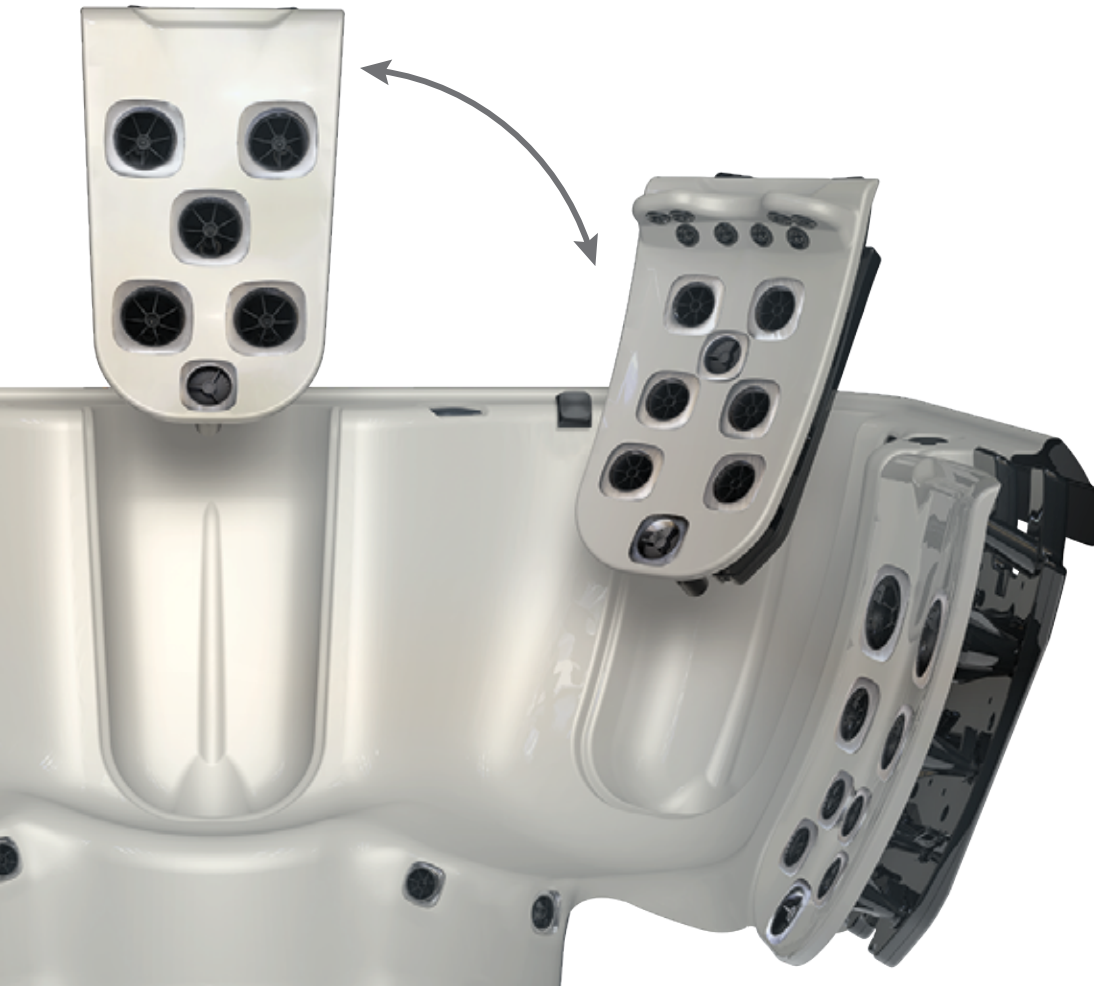
Your Bullfrog Spa allows you to select the specific JetPak massages to support recovery, rejuvenation, pain relief, or whatever your body needs. You will be able to exercise more, escape pain, relax tired muscles, sleep better, and feel better.



JETPAK THERAPY SYSTEM™

You deserve the best spa experience, and that means a spa that is personalized just for you.

Bullfrog Spas created the JetPak Therapy System™ to allow you to fit your spa to your body and lifestyle. Only Bullfrog Spas let you select your perfect massages, move them from seat to seat, and upgrade at any time.





PEACEFUL MIND

We all need a little time for ourselves, time to slow down, unwind, and decompress. Escape can be as close as your own backyard. In just a few minutes a day you can make relaxation a reality. And your soothing spa experience is all your own, completely personalized with your ideal selection of JetPak massages, each one suited to your specific preferences.



SOOTHING SOUND

Relaxation, therapy, and good times are all enhanced by your soundtrack.

Bullfrog Spas feature series-specific audio options that offer rich sound, seat surround speakers, a convenient location to rest and charge your device, an in-spa sub woofer, and easy Bluetooth connectivity to your phone or digital audio player.



See dealer for audio system specifications and details.

PEACEFUL HOME

Your Bullfrog Spa is the perfect place to get together with those you love. Whether it's a get together, backyard BBQ, a party with friends and neighbors, or a little quiet time with the most important person in your life, your Bullfrog Spa is the ideal way to make strong and lasting connections. Bring a little peace to your home with your new Bullfrog Spa.



PATIO PERFORMANCE COVERS

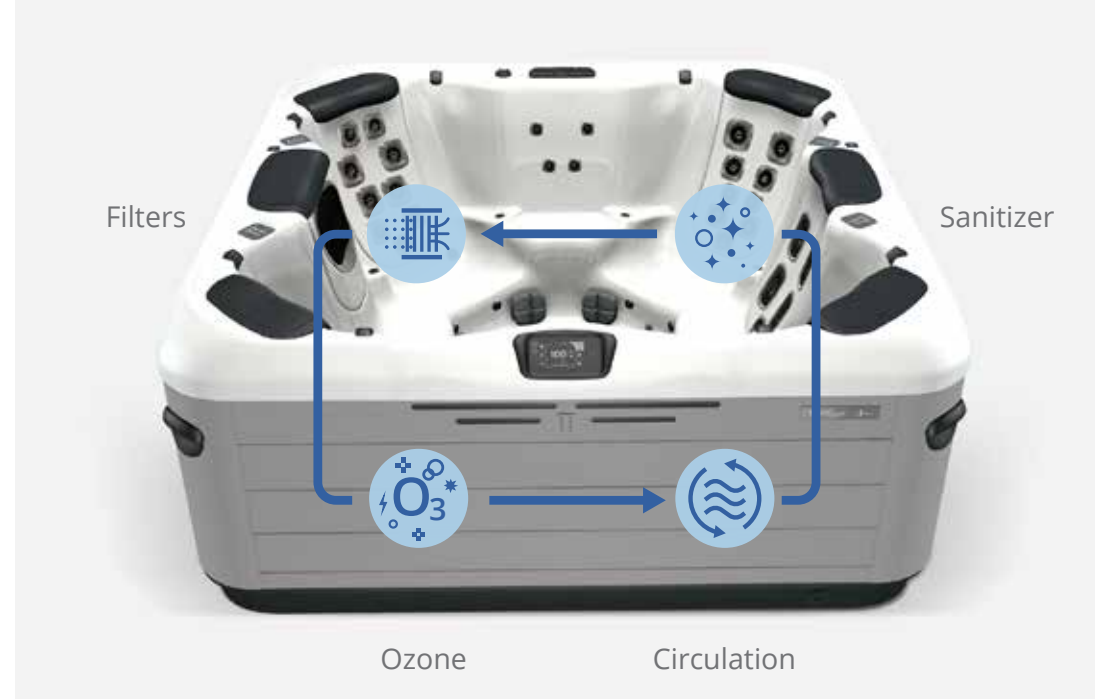


All Bullfrog Spas in the A, R, and X Series lines feature our exclusive Patio Performance™ spa covers. This ultra-durable fabric cover is treated with a similar process to that used on many high-end patio furnishings, which helps them to withstand the rigors of outdoor use in harsh environments.

Available in 2 colors, Pewter and Chocolate, these premium spa covers offer a fade-free UV coating, water resistance, incredible insulation for energy efficiency, and they are up to 25% lighter than standard vinyl covers.



WATER CARE



PREMIUM WATER CARE

SPA OWNERSHIP HAS NEVER BEEN SO EASY.

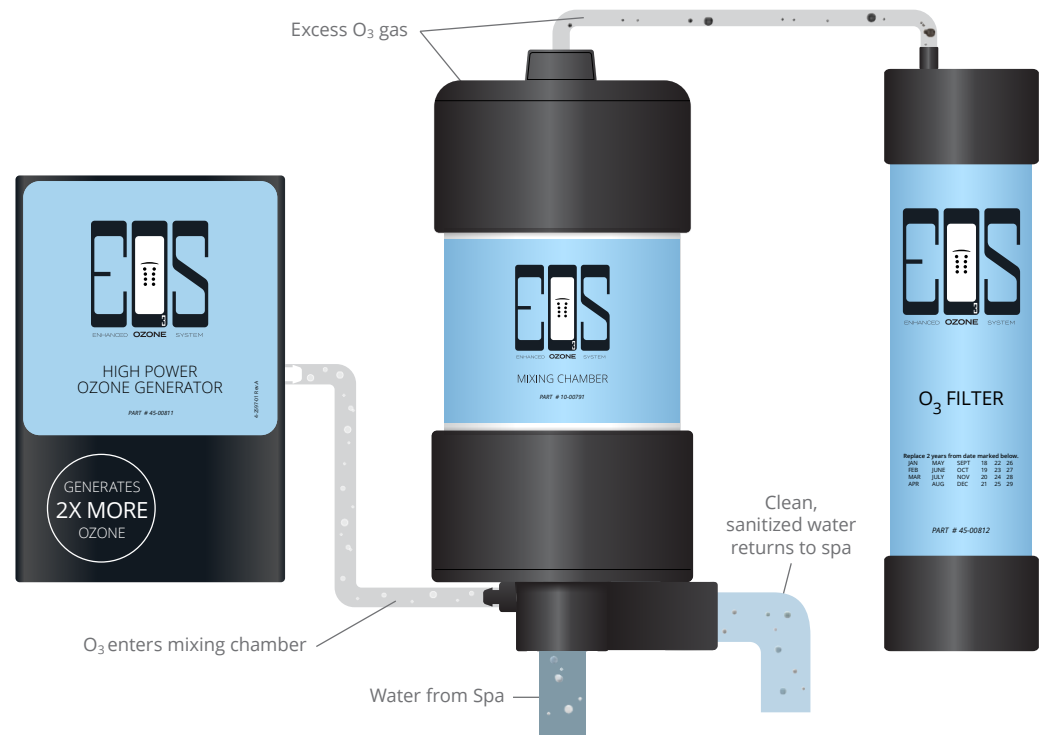
The Bullfrog Spas Premium Water Care Package combines the unique benefits of three highly effective clean water systems that together produce optimal results when it comes to impurity removal and sanitization. With the Bullfrog Spas Enhanced Ozone System (EOS O₃™), FROG® @ease®, and the WellSpring Circulation Pump, you can enjoy your spa with a water care experience that minimizes the hassle of maintaining clean, healthy water.

What does this mean for you as a hot tub owner? With all three systems working in tandem, your spa water will require less addition of sanitizing agents and chemicals than ever before. Now you can relax and get the relief you deserve—worry free.

EOS O₃TM ENHANCED OZONE SYSTEM

BREATHE EASY, USE LESS
CHEMICAL SANITIZER, AND
WORRY LESS WITH EOS O₃TM.

The EOS O₃TM is a revolutionary water purification system that's up to twice as effective at oxidizing out impurities, without the negative effects of excess ozone gas. This unique 3-part system generates as much as 2 times the amount of ozone as standard systems, charges spa water with O₃ more effectively, sanitizes spa water better, and destroys nearly all of the residual O₃ gas. EOS has been third-party validated to kill 99.9% of the microorganisms found in spas.



STEP 1

The high-power O₃ generator creates **2X more ozone** than standard systems.

STEP 2

Water and O₃ are isolated and mixed vigorously for **maximum sanitization**.

STEP 3

Over 99% of excess O₃ gas is filtered and neutralized to **eliminate potential spa damage**.

2

FROG® @ease®

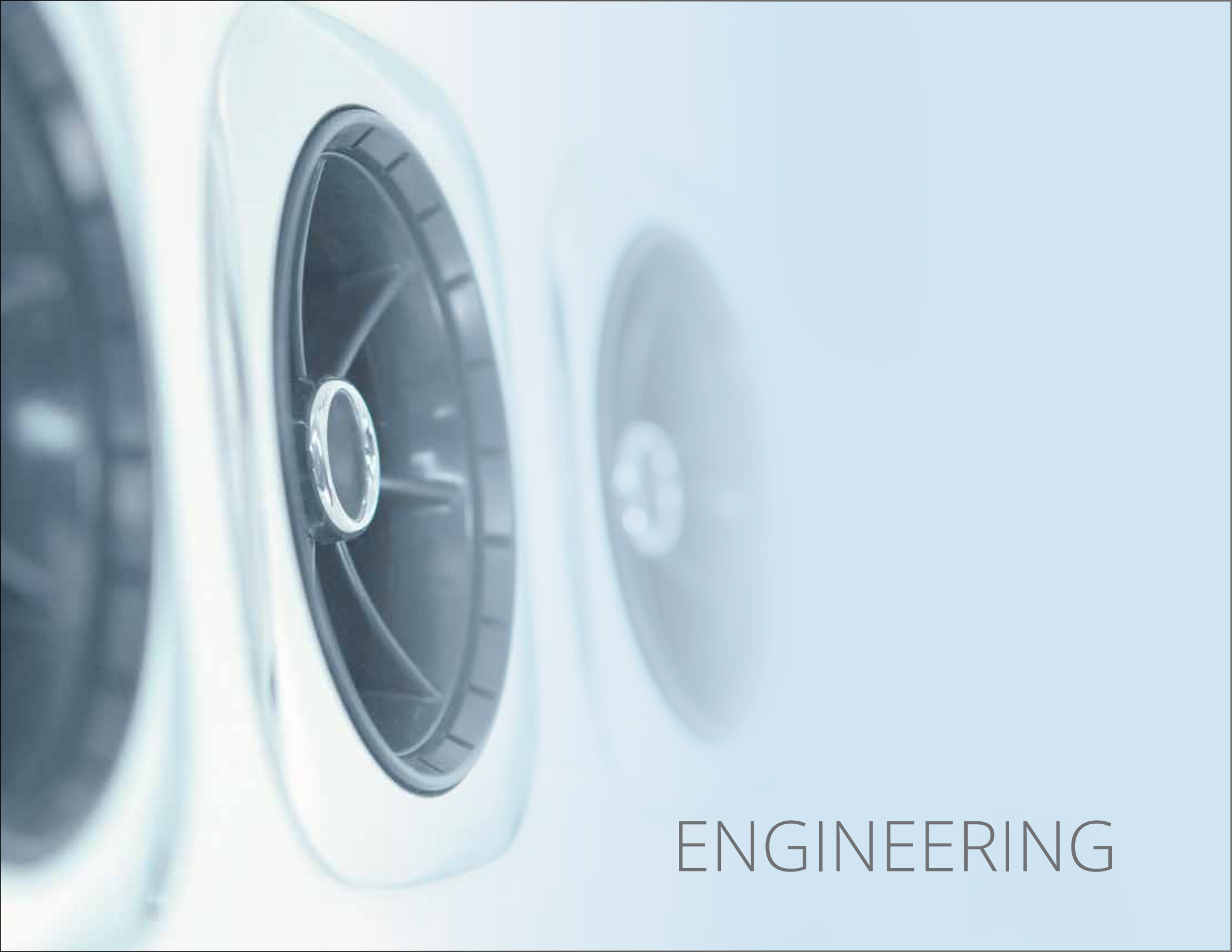
Custom designed to fit within the Bullfrog Spa filtration system, FROG @ease semi-automates chlorine release into spa water, maintaining a consistently low free chlorine level at all times. The unique two-part system comprised of proprietary minerals and SmartChlor® Technology works by creating a reserve that is converted to free chlorine as it senses demand on the hot tub. With @ease in place, you'll use up to 75% less chlorine in effort to keep your spa water clean and reduce shock to only once a month.



WELLSPRING CIRCULATION PUMP


The WellSpring Circulation Pump is 8 times more effective at moving and filtering spa water than standard pumps. The more times your water goes through the filter, the cleaner your water will be. Moving 35 gallons (130 liters) per minute, this circulation pump can push every ounce of water through the dual filters many times per day.

3



ENGINEERING

JETPAK THERAPY SYSTEM™



.....0

PLUMBING

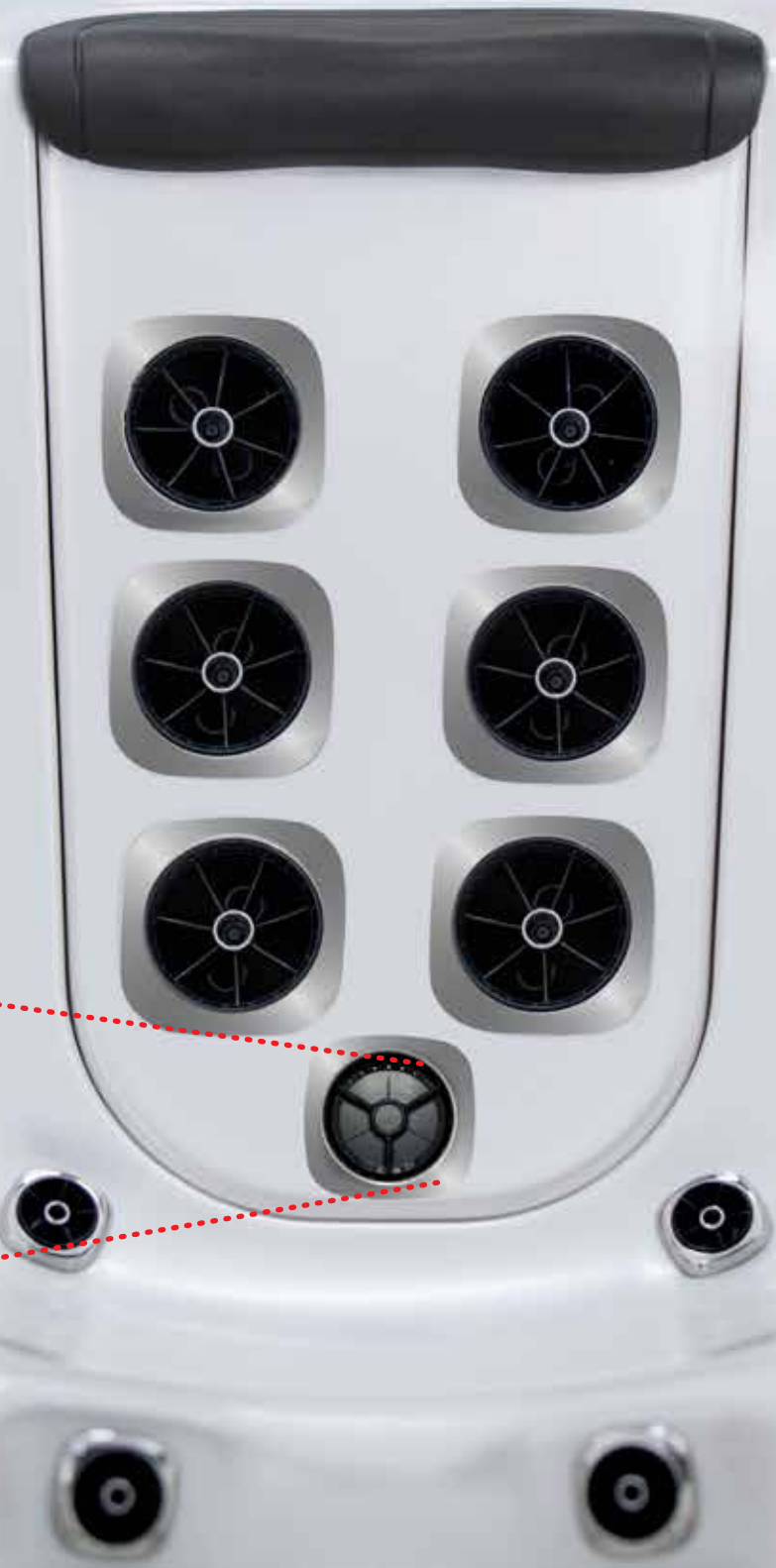
.....100%

PERFORMANCE

The plumbing used in other spas is inefficient, expensive, and unreliable. Bullfrog Spas' exclusive H₂Air Manifold is one simple self-contained seat-back unit. The result is far less plumbing, greater efficiency, and optimal performance.

DIALED IN

Every aspect of the JetPak Therapy System was re-imagined and engineered to deliver the best personalized therapy and performance. With JetPaks® you are in complete control the pressure of your massage experience.





CUSTOMIZATION

■ NECKBLASTER™

Maximum Stress Relief

The NeckBlaster JetPak provides a one-of-a-kind massage. With full-coverage neck and shoulder jets, along with a complete array of single pulse jets, you'll get a powerful massage that eliminates built-up tension in neck and shoulder muscles.



■ ALLEVIATE™
Perfectly Aligned Therapy

The Alleviate JetPak features 8 bio-aligned medium pressure jets with a steady-stream massage for a unique whole-back sensation.



■ PULSATOR™
Comfortable Rhythmic
Massage

The Pulsator JetPak features 6 rotating dual pulse jets to provide comfortable, rhythmic full-back therapy.



■ ACUTHERAPY™
Focused Stress Relief

The AcuTherapy JetPak combines deep-relief jets for the upper and lower back muscles and a medium pressure massage for the mid back.

UPGRADEABILITY

■ FIBROTHERAPY™

Therapy for Pain Relief and Health

The FibroTherapy JetPak is engineered to provide a unique kneading action to relax your lower back with deep-penetrating therapy in the area of your thoracic vertebrae.





GYROSSAGE™
Peaceful Rhythmic
Sensation

The Gyrossage JetPak utilizes 5 rotating single pulse jets to provide a rhythmic kneading massage for your entire back.



RELIEVER™
Maximum Relief

The Reliever JetPak combines a deep steady massage in the lower back with a medium-pressure kneading of upper obliques.



DEEPRELIEF™
Deep Tension Relief

The DeepRelief JetPak provides a steady, penetrating whole-back massage for maximum tension relief.



PERSONALIZATION

■ NECKMASSEUSE™

Targeted Neck Therapy

The NeckMasseuse JetPak combines a targeted deep-pressure massage for relief of neck, shoulder, and upper back tension with the rhythmic massage of 3 large, rotating single-pulse jets.



OSCILLATOR™
Ultimate Kneading
Massage

The Oscillator JetPak provides a unique wide-coverage kneading massage to soothe all key regions of your back.



VERSA™
A Versatile Spa Massage

The Versa JetPak combines a deep penetrating direct massage for the upper back and shoulders with a therapeutic kneading mid-back massage and pulsating low back relief.



RAINSHOWER™
Smooth Soothing
Sensation

The RainShower JetPak features 42 of Bullfrog Spas' exclusive Shower Jets aligned for a smooth caressing whole-back massage.

INTERCHANGEABILITY

■ LUMBAR™

Powerful Low-Back Therapy

The Lumbar JetPak targets key pressure points in your lower back with a deep-pressure penetrating hydromassage, combined with a rhythmic dual-pulse massage for the upper back muscles.





■ SPINALHEALTH™
Powerful Spinal Therapy

The SpinalHealth JetPak provides a steady deep-penetrating massage for the upper and lower spinal muscles.



■ TRIO™
Deep Kneading Therapy

The Trio JetPak provides unique kneading action for the ultimate full-back massage experience.



■ WELLNESS™
All-Around Back Therapy

The Wellness JetPak combines 3 unique jet types to create an amazing whole-back massage experience.



A SERIES

PREMIUM LUXURY

Advanced and stylish, yet elegantly simple, the A Series sets a new standard in spa excellence.

A9L

SIZE	7' 10" x 9' 2" x 38" / 2.39m x 2.79m x .97m
WATER CAPACITY	571 gal / 2161 L
DRY WEIGHT	910 lbs / 413 kg
FILLED WEIGHT	6939 lbs / 3147 kg
JETPAKS	7
INDUSTRIAL PUMPS	3



7
custom JetPaks

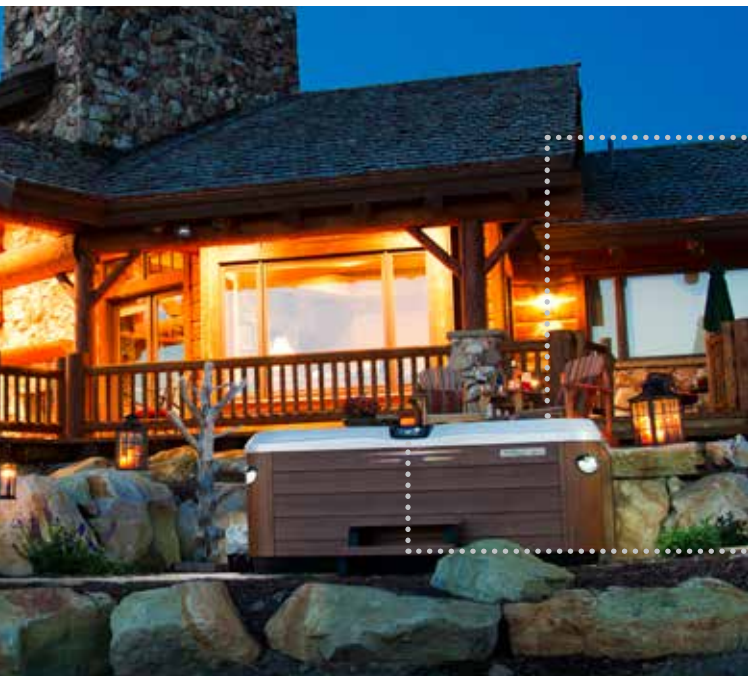
8
available seats
with side-by-side multi-lounge layout

1
5" directional jet in footwell



SIZE 7' 10" x 7' 10" x 38" / 2.39m x 2.39m x .97m
WATER CAPACITY 540 gal / 2044 L
DRY WEIGHT 758 lbs / 344 kg
FILLED WEIGHT 6409 lbs / 2907 kg
JETPAKS 6
INDUSTRIAL PUMPS 2

A8



6
comfort pillows

8
available seats

1
A1000 display
(standard on all A-Series spas)



A8L

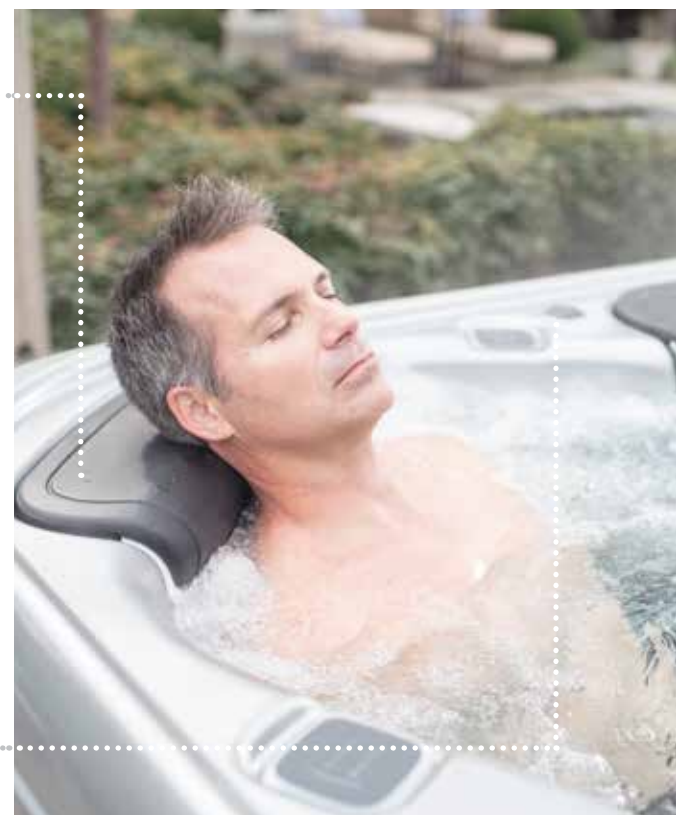
SIZE	7' 10" x 7' 10" x 38" / 2.39m x 2.39m x .97m
WATER CAPACITY	504 gal / 1908 L
DRY WEIGHT	778 lbs / 353 kg
FILLED WEIGHT	6296 lbs / 2856 kg
INDUSTRIAL PUMPS	2



4
premium back-lit
cupholders

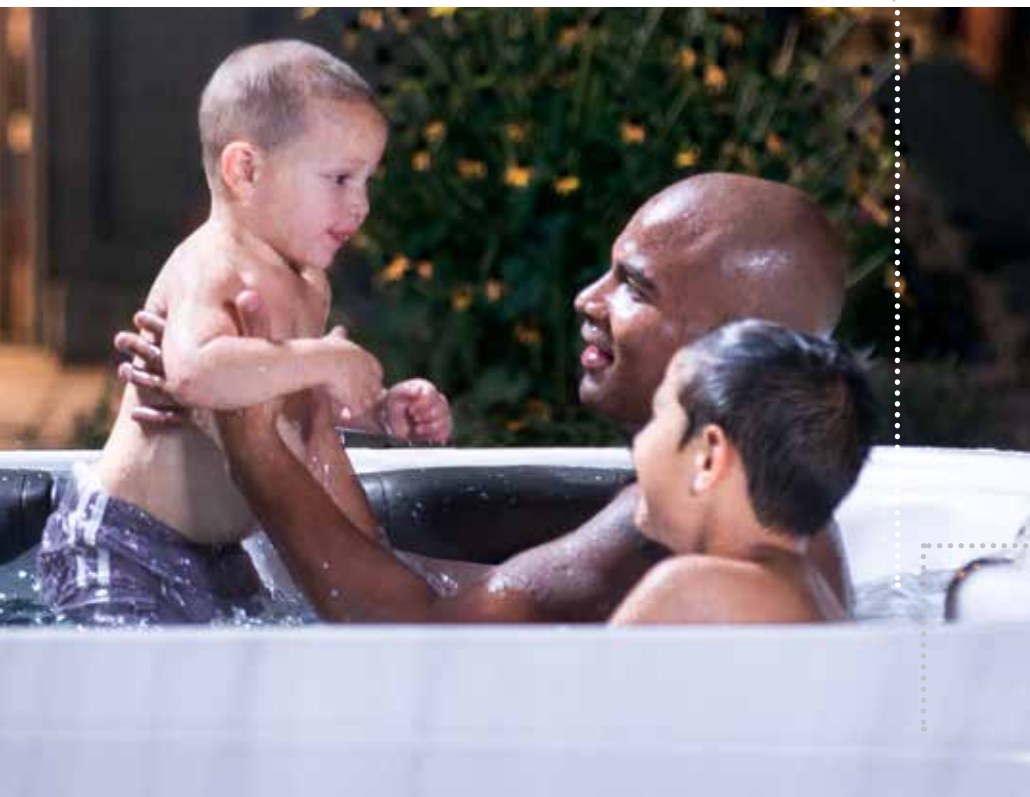
7
available seats

2
auxiliary remotes



A8D

SIZE	7' 10" x 7' 10" x 38" / 2.39m x 2.39m x .97m
WATER CAPACITY	512 gal / 1938 L
DRY WEIGHT	763 lbs / 346 kg
FILLED WEIGHT	6164 lbs / 2796 kg
JETPAKS	5
INDUSTRIAL PUMPS	2



2
full comfort
lounges

5
available
seats

18
premium body jets



A7

SIZE	7' 4" x 7' 4" x 36" / 2.24m x 2.24m x .91m
WATER CAPACITY	434 gal / 1643 L
DRY WEIGHT	661 lbs / 300 kg
FILLED WEIGHT	5316 lbs / 2411 kg
JETPAKS	5
INDUSTRIAL PUMPS	2

**Estimated monthly operating cost based on \$.10 per kw/h, 60°F ambient temperature, 102°F water temperature and CEC reported data.*



8
interior speakers
(audio system optional)



8
available seats

\$12
per month EST*



SIZE	7' 4" x 7' 4" x 36" / 2.24m x 2.24m x .91m
WATER CAPACITY	440 gal / 1666 L
DRY WEIGHT	680 lbs / 308 kg
FILLED WEIGHT	5235 lbs / 2375 kg
JETPAKS	5
INDUSTRIAL PUMPS	2

A7L



2
luxury captain chairs

6
available seats

1
full comfort lounge



A6L

SIZE	6' 8" x 7' 4" x 34" / 2.03m x 2.24m x .86m
WATER CAPACITY	350 gal / 1324 L
DRY WEIGHT	575 lbs / 261 kg
FILLED WEIGHT	4552 lbs / 2065 kg
JETPAKS	4
INDUSTRIAL PUMPS	1 or 2



1

Cascadia water feature
(standard on all A Series spas)

SIZE	7' 4" x 6' 8" x 34" / 2.24m x 2.03m x .86m
WATER CAPACITY	359 gal / 1359 L
DRY WEIGHT	575 lbs / 261 kg
FILLED WEIGHT	4625 lbs / 2098 kg
JETPAKS	4
INDUSTRIAL PUMPS	1 or 2

A6



4

premium lit
cup holders

7

available seats

4

exterior sconce lights
(standard on all A Series spas)



A5L

SIZE	7' x 5' 8" x 31" / 2.13m x 1.73m x .79m
WATER CAPACITY	243 gal / 920 L
DRY WEIGHT	455 lbs / 206 kg
FILLED WEIGHT	3209 lbs / 1456 kg
JETPAKS	3
INDUSTRIAL PUMP	1



3
available seats

110V
(optional on A5L)



R SERIES

AFFORDABLE LUXURY

★★★★

Stunning design with uncompromising quality.
The most fully featured spa in its class.



R8L



SIZE	7' 10" x 7' 10" x 38" / 2.16m x 2.16m x .97m
WATER CAPACITY	488 gal / 1847 L
DRY WEIGHT	778 lbs / 353 kg
FILLED WEIGHT	5931 lbs / 2856 kg
JETPAKS	4
INDUSTRIAL PUMPS	2

7
available seats

R8



complete relaxation

8

available seats



SIZE	7' 10" x 7' 10" x 38" / 2.16m x 2.16m x .97m
WATER CAPACITY	524 gal / 1984 L
DRY WEIGHT	758 lbs / 3344 kg
FILLED WEIGHT	6044 lbs / 2742 kg
JETPAKS	4
INDUSTRIAL PUMPS	2

R7L



SIZE	7' 4" x 7' 4" x 36" / 2.24m x 2.24m x .91m
WATER CAPACITY	426 gal / 1613 L
DRY WEIGHT	680 lbs / 308 kg
FILLED WEIGHT	5151 lbs / 2337 kg
JETPAKS	4
INDUSTRIAL PUMPS	2

6
available seats

R7



a touch of tranquility

8

available seats



SIZE	7' 4" x 7' 4" x 36" / 2.24m x 2.24m x .91m
WATER CAPACITY	432 gal / 1635 L
DRY WEIGHT	661 lbs / 300 kg
FILLED WEIGHT	5184 lbs / 2351 kg
JETPAKS	4
INDUSTRIAL PUMPS	2

R6L



6
available
seats

SIZE	6' 8" x 7' 4" x 34" / 2.03m x 2.24m x .86m
WATER CAPACITY	342 gal / 1295 L
DRY WEIGHT	575 lbs / 261 kg
FILLED WEIGHT	4469 lbs / 2027 kg
JETPAKS	3
INDUSTRIAL PUMPS	1 or 2

R6



7
available
seats

SIZE	7' 4" x 6' 8" x 34" / 2.24m x 2.03m x .86m
WATER CAPACITY	349 gal / 1321 L
DRY WEIGHT	575 lbs / 261 kg
FILLED WEIGHT	4534 lbs / 2057 kg
JETPAKS	3
INDUSTRIAL PUMPS	1 or 2

R5L



soothing ambiance

3

available seats



SIZE	7' x 5' 8" x 31" / 2.13m x 1.73m x .79m
WATER CAPACITY	235 gal / 890 L
DRY WEIGHT	455 lbs / 206 kg
FILLED WEIGHT	3126 lbs / 1418 kg
JETPAKS	2
INDUSTRIAL PUMP	1

QUALITY

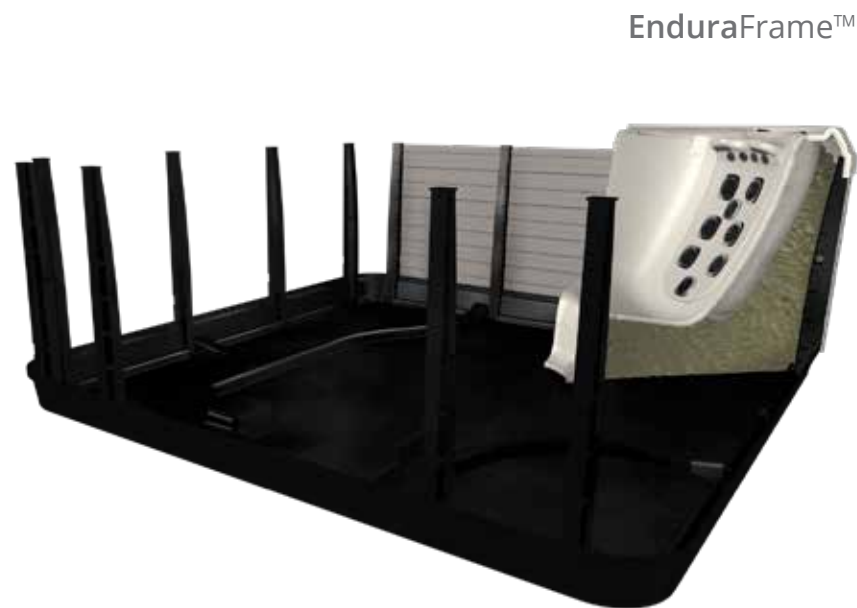
Our commitment to quality begins with the solid ABS EnduraBase™ foundation. The 100% wood-free EnduraFrame™ support structure is precision-built with a composite material that is impervious to moisture. Other conventional hot tubs still use wood or metal framing that can rot, warp, or corrode. With a Bullfrog Spa, you have no need to worry about the elements.

The ultra-durable 3-layer spa shell is designed to last a lifetime. This incredibly strong shell is further supported by energy-smart, full-foam insulation. In all areas of design and manufacturing, your Bullfrog Spa is built to last and is backed by our comprehensive warranty.

LIMITED WARRANTY

	A SERIES	R SERIES
EnduraFrame & Base	Life	Life
Shell Structure	10 yrs.	7 yrs.
Shell Surface	7 yrs.	5 yrs.
Components JetPaks Cabinet	5 yrs.	5 yrs.
Patio Performance Spa Cover	3 yrs.	3 yrs.
Lighting Stereo System Ozone System	1 yr.	1 yr.

See your Authorized Bullfrog Spas Dealer for complete warranty details.



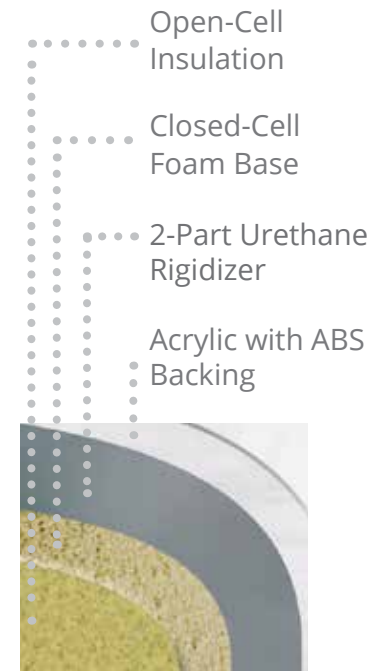
*EnduraBase U.S. Patent #8,881,321

WOOD-FREE ENDURAFRAME™

NO ROT

NO WORRIES

NO RUST



EFFICIENCY

BULLFROG SPAS
USE UP TO

90%

LESS PLUMBING

THAN
CONVENTIONAL
SPAS



ENERGY USE WATTS/HOUR

(For 6-person single lounge spa models)

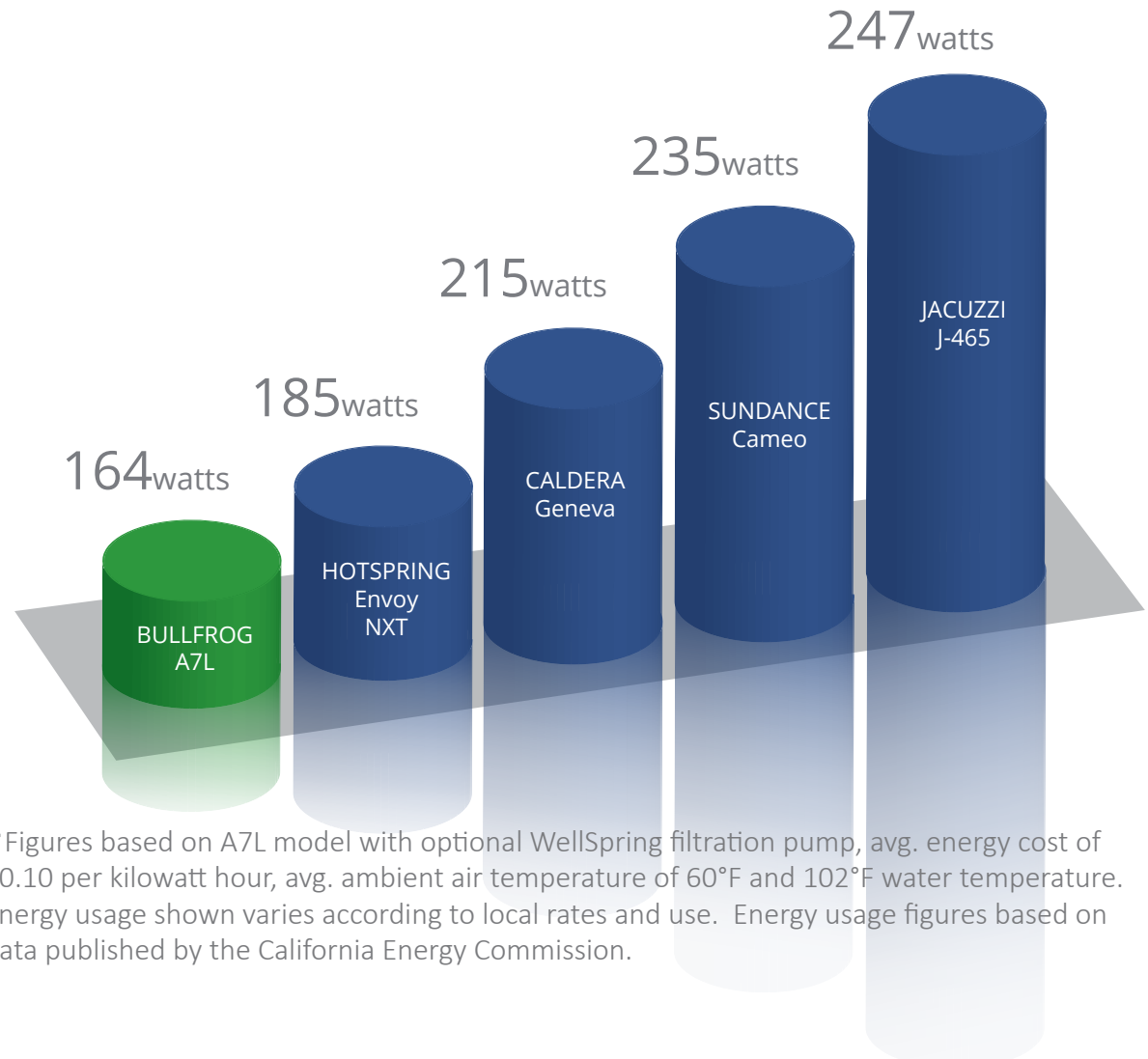
Bullfrog Spas use less energy than other comparable spas, saving you thousands of dollars over time.

The ultra-efficient plumbing design of your Bullfrog Spa provides more powerful massages while minimizing energy costs.

MONTHLY OPERATION COST

\$11.81

for an A7L model *



* Figures based on A7L model with optional WellSpring filtration pump, avg. energy cost of \$0.10 per kilowatt hour, avg. ambient air temperature of 60°F and 102°F water temperature. Energy usage shown varies according to local rates and use. Energy usage figures based on data published by the California Energy Commission.

SPA OPTIONS

FEATURES	A Series	R Series	DESCRIPTION
JetPak Therapy System	Standard	Standard	Choose from 17 unique JetPaks to customize your spa. JetPaks can be interchanged at any time.
Durable 3-Layer Spa Shell	Standard	Standard	Beautiful acrylic surface is chemically bonded to a tough ABS layer and then backed with a dense coat of polyurethane rigidizer.
Wood-Free EnduraFrame	Standard	Standard	This precision-formed ABS frame is strong, durable, and moisture proof. No rotting, warping or corrosion like wood-framed or metal-framed spas.
Electronic Spa Control	A1000	R800	Top of the line digital controls feature full-color screens, touch functionality (A1000), and easy to navigate menus and settings..
Auxiliary Jet Control	Standard	N/A	Turn on jets to low or high from any place in the spa with these simple one-touch control buttons.
Brushed Stainless Steel Jets	Standard	Optional	Enhance the look of your spa with beautiful brushed stainless steel jet faces.
Interior LED Mood Lighting	Standard	Standard	Improve your relaxation experience with multi-colored in-spa LED lighting. Multiple modes for solid colors, fading in and out, or quickly changing colors to suit your preferences.
Perimeter Cup Holders	Backlit Standard	Standard	Your A-series cup holders are visible, even at night, with a lighted JetPak logo.
Water Feature	Cascadia	Standard	Enjoy the soothing sounds of falling water with impressive backlit water features.
ComfortFit Pillows	Premier	Standard	Comfort engineered spa pillows designed to support your relaxation position.
Audio Systems	Optional	Optional	Rich quality sound with seat-surround speakers, sub-woofer, touch screen control (A Series), blue tooth connectivity, and optional out-facing yard speakers.
Patio Performance Cover	Standard	Standard	Patio Performance premium fabric cover for durable colorfast outdoor wear.

SPA OPTIONS CONTINUED

FEATURES A Series R Series DESCRIPTION

EnduraBase	Standard	Standard	ABS base is moisture proof and 100% wood-free. Includes convenient electrical chase ways, hidden ventilation, molded hand holds, and an easy exterior drain.
Energy Smart Full-Foam Insulation	Standard	Standard	Less plumbing in our design allows for more polyurethane insulation, which fills all dead air spaces and creates a higher R-value to lock in heat.
EternaWood Cabinet	Standard	Standard	100% wood-free spa cabinet. Weather resistant and requires no maintenance.
Exterior Lighting	Standard	N/A	LED sconce exterior lights provide the perfect nighttime spa environment.
Industrial Jet Pumps	Standard	Standard	Industrial-grade pumps operate longer, quieter and use less energy.
WellSpring Water Care System	Standard	Standard	The ultimate water care system designed to provide optimum circulation and filtration for maximum water clarity and simple maintenance..
WellSpring Filtration Pump	Optional	Optional	Dedicated and programmable filtration pump improves water quality with virtually silent operation.
FROG® @ease®	Optional (USA Only)	Optional (USA Only)	Custom-designed for Bullfrog Spas, FROG® @ease® with Smartchlor® Technology semi-automates chlorine release into spa water, taking the hassle and confusion out of water maintenance
EOS O ₃ ™ (Enhanced Ozone System)	Optional	Optional	The EOS™ O ₃ premium ozone system creates 2-times more ozone than standard systems, improves mixing with a dedicated chamber, and filters out nearly 100% of the excess O ₃ gas.
WellSpring High-Output Ozone	Optional	Optional	Keep your spa water clear and use less chemical sanitizer with the power of ozone purification.
CloudControl™ 2	Optional	Optional	An Android or iOS app allows you to operate your spa from your smart phone or wi-fi enabled device. Monitor and control your spa from anywhere in the world.
CoverMate I	Optional	Optional	The CoverMate I cover lift makes it easy for even one person to lift your spa cover. Also creates a privacy shield on one side when in the lifted position.
DuraStep	Optional	Optional	Durable composite steps in coordinating colors make it easy and safe to get in and out of your spa.

NeckBlaster



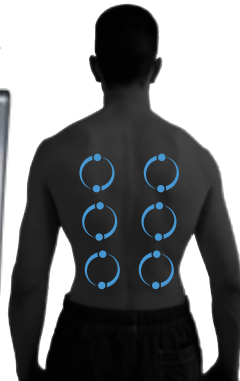
A | 204



Pulsator



A | 202



DeepRelief



A | 203



AcuTherapy



A | 214



Alleviate



A | 205



Gyrossage



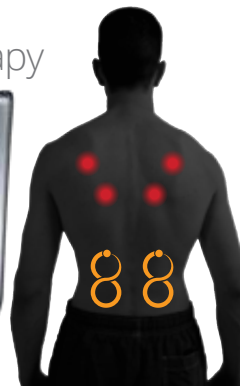
A | 211



FibroTherapy



B | 215



Reliever



B | 207



**NeckBlaster and NeckMasseuse not available in matte black JetPaks*

MASSAGE

● Powerful DeepRelief Jets



Kneading Oscillator Jets



Rhythmic Single Pulse

Relaxing FirmRelief Jets



Rapid Dual Pulse Jets

Soothing RainShower

DeepRelief Neck Jets

Wellness



B | 209

NeckMasseuse



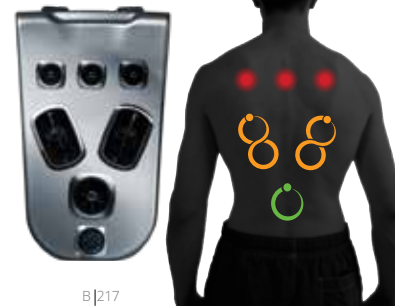
B | 206

Oscillator



B | 201

Versa



B | 217

RainShower



C | 213

SpinalHealth



C | 212

Lumbar



C | 208

Trio



C | 219

**NeckBlaster and NeckMasseuse not available in matte black JetPaks*

MASSAGE

● Powerful DeepRelief Jets



Kneading Oscillator Jets



Rhythmic Single Pulse



Rapid Dual Pulse Jets

Soothing RainShower

DeepRelief Neck Jets

A SERIES

A9L



7' 10" x 9' 2" x 38"
2.39m x 2.79m x .97m

A8



7' 10" x 7' 10" x 38"
2.39m x 2.39m x .97m

A8L



7' 10" x 7' 10" x 38"
2.39m x 2.39m x .97m

A8D

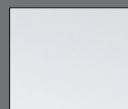


7' 10" x 7' 10" x 38"
2.39m x 2.39m x .97m

Available Colors Interior & JetPaks

*Not Available on A9L

Snow*



Pearl



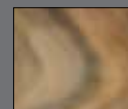
Titanium



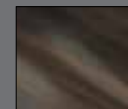
Platinum



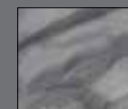
Sunset*



Midnight



Cloud*



Granite



A SERIES

A7



7' 4" x 7' 4" x 36"
2.24m x 2.24m x .91m

A7L



7' 4" x 7' 4" x 36"
2.24m x 2.24m x .91m

A6



7' 4" x 6' 8" x 34"
2.24m x 2.03m x .86m

A6L



6' 8" x 7' 4" x 34"
2.03m x 2.24m x .86m

A5L



7' x 5' 8" x 31"
2.13m x 1.73m x .79m

MODEL A9L REQUIRES A 240V-50/60A ELECTRICAL CONNECTION. ALL OTHER A SERIES BULLFROG SPAS REQUIRE 240V-30/50A. A5L ALSO AVAILABLE WITH 120V-15A OPTION.

Premium Exterior

*Not Available on A9L

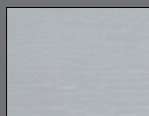
Orchard



Timber



Slate*



Standard Exterior

*Not Available on A9L

Driftwood*



Chestnut*



Covers

Chocolate



Pewter



R SERIES

R8



7' 10" x 7' 10" x 38"
2.39m x 2.39m x .97m

R8L



7' 10" x 7' 10" x 38"
2.39m x 2.39m x .97m

R7



7' 4" x 7' 4" x 36"
2.24m x 2.24m x .91m

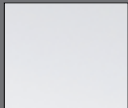
R7L



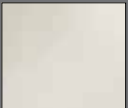
7' 4" x 7' 4" x 36"
2.24m x 2.24m x .91m

Available Colors
Interior & JetPaks

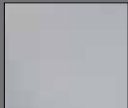
Snow



Pearl



Titanium



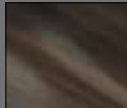
Platinum



Sunset



Midnight



Cloud



Granite



R SERIES

R6



7' 4" x 6' 8" x 34"
2.24m x 2.03m x .86m

R6L



6' 8" x 7' 4" x 34"
2.03m x 2.24m x .86m

R5L



7' x 5' 8" x 31"
2.13m x 1.73m x .79m

Exterior

Driftwood



Chestnut

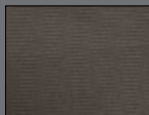


Covers

Chocolate



Pewter



ALL R SERIES BULLFROG SPAS
REQUIRE 240V-30/50A ELECTRICAL
CONNECTION. R5L ALSO AVAILABLE
WITH 120V-15A OPTION.

R SERIES SHOWN WITH STANDARD
MATTE BLACK JETPAKS.



Authorized Bullfrog Spas Dealer

www.bullfrogspas.com

Bullfrog Spas are protected by multiple patents worldwide.

Specifications subject to change without notice.

© 2019 Bullfrog International, LC. All rights reserved.

Made in the USA



5.3