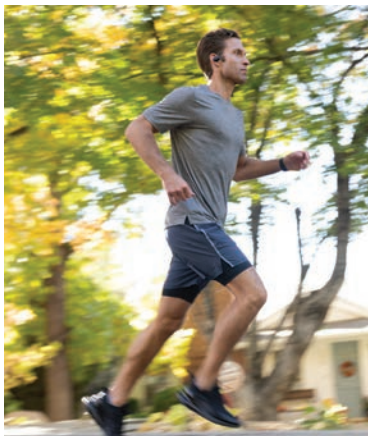




EVERY DAY MADE BETTER®





YOUR DAILY ROUTINE

With Hot Spring® Spas, every day is a chance to start fresh, with heat that awakens, crystal clear water that invites, and innovation that you can feel – inspiring you to do more, experience more, and live more.

At the end of the day, we'll help you get ready for what's next.

Unleash your best self™

VITALITY EVERY DAY

A Hot Spring® spa is a place for personal improvement, where you can immerse yourself in warm water and massage to revitalize, slow down to recover, and connect with others to feel closer. Remarkable things happen when you make spending time in your spa part of your daily routine.



BETTER WELLNESS

Hydrotherapy improves circulation and helps keep you flexible, so you can be your best, every day. Step into your Hot Spring® spa and emerge feeling better mentally, physically, and emotionally.

BETTER RECOVERY

The combination of heat and advanced massage provides a total-body therapeutic experience. Warm water raises body temperature and increases blood circulation, buoyancy relieves stress on joints to encourage better movement, and carefully placed jets massage away the knots and aches in your muscles.

BETTER SELF

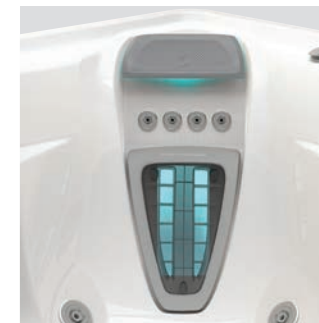
A spa provides you with a unique sense of personal well-being, a special place where the rigors of everyday life are on pause. It prepares you for the day ahead, and helps you unwind and sleep better at night. Here, you discover your best self.

BETTER CONNECTION

Spending time in a hot tub, without distractions, invites you to connect on a deeper level with the people who matter most in your life. You'll find that you feel closer and great conversations happen naturally. The benefits flow well beyond just your time in the water, they fill your life with moments that fuel your best relationships.

LEGENDARY MASSAGE

As the industry leader with more than 45 years of hydrotherapy expertise, Hot Spring perfected the warm water massage. Comfortable seats and specialized jet systems work together to create a distinctive experience that is precise and personalized. We invite you to experience it yourself.



BACK MESSAGE LIKE NO OTHER

There's nothing like the patented Moto-Massage® DX moving jet. It delivers two powerful streams of water that sweep up and down the length of your back. It's a massage like no other.

Four Precision® jets positioned above every Moto-Massage DX jet massage your neck and shoulders. These jets work in harmony for an unparalleled hydrotherapy experience.

Available on Highlife® Collection.



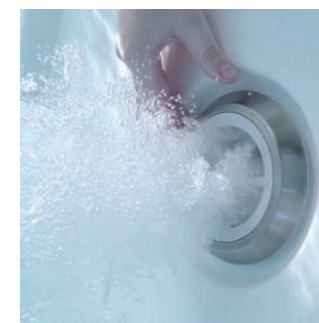
PLACEMENT WITH PURPOSE

Each spa uses a variety of jets, each with its own purpose. They are thoughtfully arranged in each seat and work together to target specific muscle groups from your neck to your shoulders, back, calves, wrists and feet.



COMFORT THAT FITS YOU

Ergonomically designed shells are shaped to fit the body's natural contours, perfectly positioning you to relieve pressure and stress. With multi-level seating, there's a comfortable spot to satisfy every body's needs.



PERSONALIZED CONTROL

The Comfort Control® system lets you dial in your ideal mix of air and water for a powerful massage or just a soft touch. Use the SmartJet® system to customize water flow to different jet groups and seats throughout the spa.



EASY WATER CARE

A great hot tub experience starts with water that looks, feels, and smells great. Unique and innovative technologies deliver clean water with less effort.

THE SIMPLER, CLEANER, FRESHER WAY TO HOT TUB™

The FreshWater® Salt System is a revolution in water care. This breakthrough technology is the simple way to keep your hot tub water clean and feeling soft for up to a full year.*

Available on Highlife® and Limelight® Collections.

freshwater®
Salt System

FEELS BETTER

Water is sanitized with a titanium cartridge that automatically generates chlorine from salt. You'll enjoy soft, natural-feeling water without harsh odors, itchy skin, or irritated eyes.

SIMPLE CARE

The titanium cartridge lasts up to four months. When it's time to replace it, you can do it in seconds without tools and without draining the water.

MINERAL SPA SANITIZER

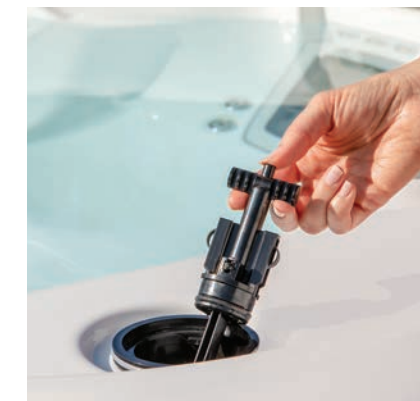
For the ultimate water care solution, add this silver ion cartridge to inhibit bacteria growth and further reduce the need for chemical sanitizer.

Available in the U.S. only.



LESS EFFORT

Spend less time maintaining your spa and more time enjoying it. The control panel displays helpful messages that eliminate guesswork by showing you how the system is working and what adjustments might be needed.



CONSERVES WATER

When properly maintained, water life is extended, reducing the need to drain and refill your spa for up to 12 months – up to three times longer than traditional water care.*



*Many factors affect the life of spa water, such as bather load and water chemistry. When spa water is properly maintained considering these factors, a 3-pack of FreshWater Salt System cartridges will keep water clean and clear for up to a full year.

EASY WATER CARE

FROG® @EASE® IN-LINE SANITIZING SYSTEM

This system automatically dispenses SmartChlor® chlorine and minerals for easy water care. It self-regulates and automatically delivers more sanitizing power based on the water's needs, maintaining a consistent level of protection. @ease creates softer-feeling water that's virtually free of chemical odors since the system works with up to 75% less chlorine.

@ease is available in the U.S. only on Hot Spot® Collection. Bromine is available in Canada.



START WITH CLEAN WATER

These chemical-free accessories get you off to the right start when filling your spa. The Clean Screen® pre-filter attaches to your garden hose to filter out organic contaminants, tannins and metals. Use Vanishing Act® or On The Go® calcium removers to reduce hardness for softer-feeling water.

100% NO-BYPASS FILTRATION AND TRI-X®

All the water in a Highlife® Collection spa is filtered all the time. In other spas, water bypasses the filters when the jets are on – which is when you need it most. With our exclusive system, all the water passes through the filters, even when the jets are running.

High-flow Tri-X filters are the key. Exclusive three-dimensional technology provides more effective filtration area compared to paper filters of the same size, to filter significantly more water. This also means they don't need to be cleaned as often, and when they do, they are dishwasher-safe for convenience.

Available on Highlife Collection.

DUAL-ACTION FILTRATION

This unique two-filter design provides for more effective, constant filtration. One filter is dedicated to the circulation pump. The other is dedicated to the jet pumps to clean water when the jets are running. Working together, these two filters provide more total effective filtration area to keep water cleaner with less maintenance.

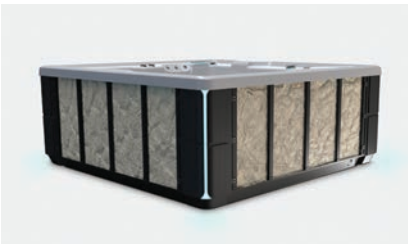


Available on Limelight® Collection.



LEADING ENERGY EFFICIENCY

Your spa will be hot and ready when you want it. The comprehensive Energy Smart® system uses a combination of innovations to maintain spa water at your set temperature while keeping energy costs low.



HIGH-DENSITY FOAM INSULATION

The same material found in commercial freezers is applied in multiple layers of varying densities. This helps eliminate gaps and voids to lock in heat and maximize energy efficiency.

Available on Highlife® Collection.

FIBERCOR® INSULATION

This exclusive insulation fills the cabinet completely with a density four times greater than the half-pound foam used in most spas.

Available on Limelight® and Hot Spot® Collections.



CUSTOM-FIT COVERS

Proprietary covers ensure a tight seal that locks in heat. Dense foam cores and an exclusive hinge seal help prevent heat from escaping for added energy efficiency. All Hot Spring covers feature child safety locks and are UL-listed to ASTM standards for safety.

INSULATED BASE PAN

Structural ribbing on the bottom of the spa increases energy efficiency by creating insulating air space and minimizing contact with cold ground.

Available on Highlife Collection.

TITANIUM NO-FAULT® HEATER

A titanium heater maximizes heat transfer to the water and delivers unmatched corrosion resistance. In fact, this patented No-Fault heater is warrantied regardless of water chemistry.

Available on Highlife and Limelight Collections.

SILENTFLO 5000® CIRCULATION PUMP

A dedicated pump continuously circulates spa water, 24 hours a day, while using less energy than a 40-watt light bulb. This eliminates the need to rely on high-powered jet pumps to circulate water, reducing energy costs and wear.

Available on Highlife® and Limelight® Collections.

Optional on select Hot Spot® Collection models.

RECYCLED HEAT

The patented pump shroud captures heat generated in the spa's equipment compartment and transfers it to the water to reduce energy consumption.

Available on Highlife® and Limelight® Collections.

ENERGY COST

All models meet or exceed stringent California Energy Commission (CEC) and APSP 14 energy efficiency standards for portable spas. Actual energy costs depend on spa model, usage, temperature, and other factors. The table below estimates energy cost of a mid-sized Highlife Collection spa in heavy use.

MONTHLY COST ESTIMATES = RATE X KILOWATT HOUR

City	Temp	kWh	Rate	Cost
Miami, FL	75 °F / 23 °C	100	\$0.10	\$10.00
Las Vegas, NV	70 °F / 21 °C	122	\$0.08	\$9.76
Tulsa, OK	60 °F / 15 °C	166	\$0.08	\$13.28
Seattle, WA	55 °F / 12 °C	188	\$0.08	\$15.04
Chicago, IL	50 °F / 10 °C	210	\$0.10	\$21.00
Calgary, Canada*	40 °F / 4 °C	253	\$0.11	\$27.83

Temp: Approximate annual mean ambient temperature
kWh: Approximate average kilowatt hours per month to operate spa**
Rate: Approximate average rate charged per kilowatt hour in dollars***
Cost: Approximate average monthly energy cost to operate spa**

* In Canadian dollars; based on average rates from the Alberta Utilities Commission, March 2022.
** Based on a medium-sized Highlife Collection spa set at 102 °F used six times per week – 15 minutes with jets on and 15 minutes with jets off during each use. Testing conducted by independent third-party certified laboratory in a controlled environmental chamber at multiple ambient temperatures using continuous data acquisition monitoring of watts, temperature and humidity, with all equipment calibrated to ensure data accuracy. Individual energy consumption will vary depending on set water temperature, actual consumer usage patterns, and actual environmental ambient conditions.
*** Based on rates from the U.S. Energy Information Administration, November 2021. Rates subject to change. Check with your local electricity provider for your current rate.

CHOOSE YOUR SPA

With three distinct Collections and a wide range of models, sizes, and colors, there's a Hot Spring® spa that fits your space, your style, and you.



HIGHLIFE® COLLECTION

Our best. To unleash your best.



LIMELIGHT® COLLECTION

Advanced design and features. A cut above.



HOT SPOT® COLLECTION

Quality, performance, and value. Maximize your every day.

HIGHLIFE® COLLECTION

Our Best. To Unleash Your Best.

For those who expect the most out of life, the Highlife Collection is everything a hot tub can be. Exceptionally designed and engineered. Generously appointed. It's our very best.



FRESHWATER® SALT SYSTEM READY

A revolution in water care that helps you spend more time enjoying your spa and less time maintaining it.



WIRELESS REMOTE CONTROL

Operate spa functions from anywhere in the spa and up to 30 feet away with this unique, easy-to-read color touchscreen.



MOTO-MASSAGE® DX JET

Patented moving jets provide two powerful water streams that sweep up and down your back for a massage like no other.



100% NO-BYPASS FILTRATION AND TRI-X®

All the water is filtered all the time and dishwasher-safe Tri-X filters help keep water crystal clear.



SUPER ENERGY EFFICIENT AND ENERGY SMART®

High-density, full-foam insulation is the same found in commercial freezers. With the comprehensive Energy Smart system of innovations, these are our most energy-efficient hot tubs.



POLYMER STRUCTURE AND BASE PAN

Built for durability and long life with a structure that will never rust or rot.

HIGHLIFE® COLLECTION

Strikingly Beautiful

Bold, yet elegant. Fresh, yet timeless. Graceful, yet powerful. The Highlife® Collection redefines how a hot tub looks. Elegantly contoured corners reveal accent lights that beckon you closer. Stainless steel and brushed metal finishes add richness and refinement. Clean lines, rich finishes and durable materials all work together in harmony to create a unique look that both inspires and endures.



Shown with Blackwood cabinet and Platinum shell.

JAVA



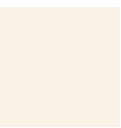
SHELL



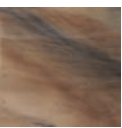
Alpine White



Ice Gray



Ivory



Tuscan Sun



Pebble

COVER

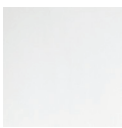


Nutmeg

CHARCOAL



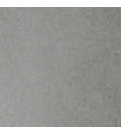
SHELL



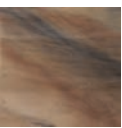
Alpine White



Ice Gray



Platinum



Tuscan Sun



Pebble

COVER

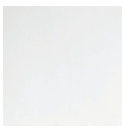


Graphite

BLACKWOOD



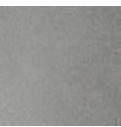
SHELL



Alpine White



Ice Gray



Platinum

COVER

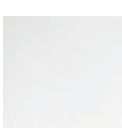


Graphite

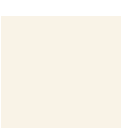
LINEN



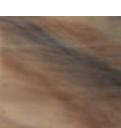
SHELL



Alpine White



Ivory



Tuscan Sun



Pebble

COVER

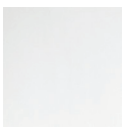


Nutmeg

BRUSHED NICKEL



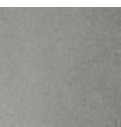
SHELL



Alpine White



Ice Gray



Platinum

COVER

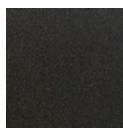


Graphite

ADDITIONAL POLYESTER COVER OPTIONS



Gray



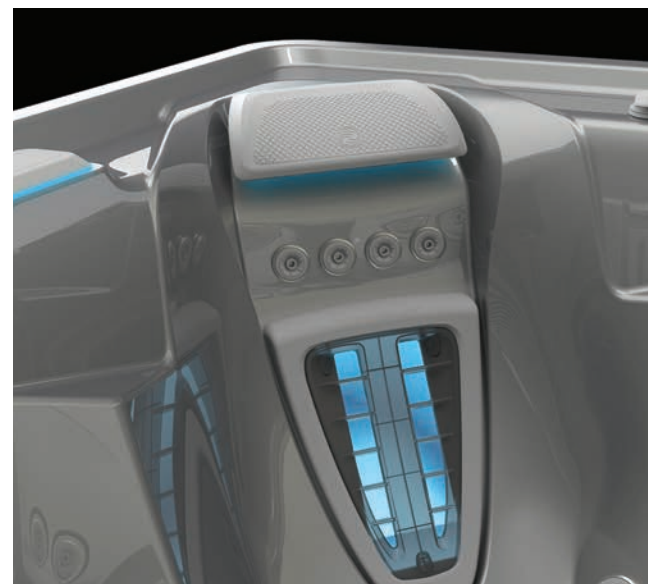
Black

Actual colors and products may vary from print representation. See dealer to verify.

HIGHLIFE® COLLECTION

Light Your Night

Create subtle accent lighting or a medley of color with the customizable multi-zone Luminescence® LED lighting system.



DELIGHT YOUR SENSES

Enhance your hot tub experience with the sights and sounds of the exclusive BellaFontana® water feature. Three colorful backlit arcs of water converge to create this elegant fountain that you will enjoy from inside or outside your spa.

Included on most models.



HIGHLIFE® COLLECTION

Distinctive Massage

Sculpted seats fit your body's contours to help relieve pressure. Up to seven different jet types are thoughtfully arranged for a targeted full-body massage that you can dial in for a personalized experience. With a Highlife Collection spa, every day can be an inspiration to do more, experience more, and live more.



FEELS JUST RIGHT

Simply adjust the jet face with the Comfort Control® system to dial in a personalized experience with powerful massage or a soft touch. The SmartJet® system customizes water flow to different jet groups and seats throughout the spa.

COMFORTABLE SEATING

Contoured seats cradle your body in a natural position to deliver a better spa experience. Combined with a spacious footwell, integrated pillows and at least one Moto-Massage® DX jet in every model, you can truly relax in comfort.

READY, SET, SOAK

Be confident that your spa is hot and ready before you even step outside with the Ready Indicator Light in the Hot Spring® logo. This valuable feature also serves as a helpful diagnostic tool, letting you know when your spa needs attention.



EASY MAINTENANCE

A convenient floor drain means no bailing water when performing scheduled water changes.



HIGHLIFE® COLLECTION



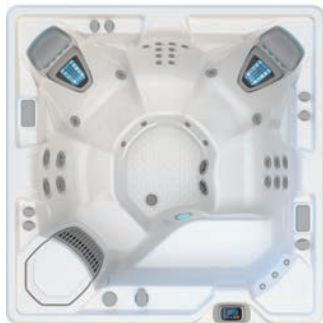
GRANDEE®

7 Seats
Open Seating
8'4" x 7'7" x 38"
254 cm x 231 cm x 97 cm
230 V



ENVOY®

5 Seats
Lounge Seating
8'4" x 7'7" x 38"
254 cm x 231 cm x 97 cm
230 V



VANGUARD®

6 Seats
Open Seating
7'3" x 7'3" x 36"
221 cm x 221 cm x 91 cm
230 V



ARIA®

5 Seats
Lounge Seating
7'3" x 7'3" x 36"
221 cm x 221 cm x 91 cm
230 V



SOVEREIGN®

5 Seats
Lounge Seating
6'8" x 7'9" x 33"
203 cm x 236 cm x 84 cm
230 V



PRODIGY®

5 Seats
Open Seating
7' x 6'6" x 33"
213 cm x 198 cm x 84 cm
230 V



JETSETTER® LX

3 Seats
Lounge Seating
7' x 5'8" x 33"
213 cm x 173 cm x 84 cm
230 V



JETSETTER®

3 Seats
Lounge Seating
7' x 5'8" x 33"
213 cm x 173 cm x 84 cm
115 V or 230 V

	Grandee®	Envoy®	Vanguard®	Aria®	Sovereign®	Prodigy®	Jetsetter® LX	Jetsetter®
Jets	49	55	42	42	32	28	30	22
Water Capacity	455 gal 1,725 L	455 gal 1,725 L	375 gal 1,425 L	365 gal 1,400 L	330 gal 1,250 L	270 gal 1,025 L	250 gal 950 L	245 gal 925 L
Filled Weight	5,810 lb 2,645 kg	5,455 lb 2,480 kg	4,890 lb 2,225 kg	4,600 lb 2,110 kg	4,230 lb 1,920 kg	3,705 lb 1,685 kg	3,125 lb 1,425 kg	3,070 lb 1,390 kg
Entertainment	Optional	Optional	Optional	Optional	Optional	Optional	Optional	Optional
Lighting	Interior & Exterior	Interior & Exterior	Interior & Exterior	Interior & Exterior	Interior & Exterior	Interior & Exterior	Interior & Exterior	Interior & Exterior
Circulation Pump	SilentFlo 5000®	SilentFlo 5000	SilentFlo 5000	SilentFlo 5000	SilentFlo 5000	SilentFlo 5000	SilentFlo 5000	SilentFlo 5000
Filtration	100% No-Bypass	100% No-Bypass	100% No-Bypass	100% No-Bypass	100% No-Bypass	100% No-Bypass	100% No-Bypass	100% No-Bypass
Insulation	High Density Foam	High Density Foam	High Density Foam	High Density Foam	High Density Foam	High Density Foam	High Density Foam	High Density Foam
Water Care System	FreshWater® Salt System Ready	FreshWater Salt System Ready	FreshWater Salt System Ready	FreshWater Salt System Ready	FreshWater Salt System Ready	FreshWater Salt System Ready	FreshWater Salt System Ready	FreshWater Salt System Ready



VISUALIZE THESE SPAS IN YOUR SPACE

Download the free Virtual View™ AR app and use augmented reality to see how a Hot Spring spa can transform your space.



LIMELIGHT® COLLECTION

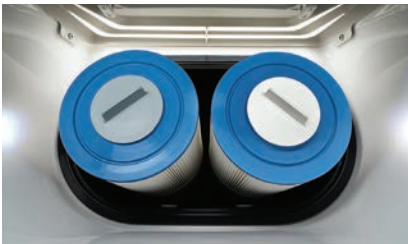
Advanced Design and Features. A Cut Above.

Featuring fresh clean lines, colorful mood lighting and sleek corner accents, Limelight Collection spas stand out from the crowd. Best-in-class features and a legendary Hot Spring® experience make these spas a cut above the rest.



FRESHWATER® SALT SYSTEM READY

A revolution in water care that helps you spend more time enjoying your spa and less time maintaining it.



DUAL-ACTION FILTRATION

Unique two-filter designs provide more effective and constant filtration, keeping water cleaner with less maintenance.



FIBERCOR® INSULATION AND ENERGY SMART®

Exclusive insulation fills the cabinet completely to a density four times greater than the half-pound foam used in most spas. Combined with Energy Smart features, this keeps water hot and energy costs low.



COLOR LCD CONTROL

Adjust lights, temperature, jets, and more with the easy to use system. It's conveniently positioned to be accessible from inside or outside the spa.

LIMELIGHT® COLLECTION

See Things in a Whole New Light

The interior lighting system features multiple points of LED light placed to accent the contours of the spa shell. Two exterior LED lights integrate with the front corners of the spa, creating a uniquely elegant look that is unlike any other. Match the color to your mood by selecting the hue and brightness of your choice, or cycle through all six vibrant colors. Lighting can be set to automatically turn on for four hours each evening.



ROOMY SEATING

Sculpted seats position your body to relieve stress and keep you in place while providing more interior space.

READY WHEN YOU ARE

You'll always know when your spa is ready—even from a distance. A color-coded Ready Indicator Light shows at a glance when your water is at the set temperature. The light will indicate if your spa needs maintenance, a filter change, or service.



PERSONALIZED MASSAGE

Thoughtfully placed jets target specific muscle groups, from your neck to your shoulders, back, calves, wrists and feet. In a Limelight® Collection spa you have a variety of choices for a complete, full-body massage. Our Comfort Control® system lets you adjust intensity, while our SmartJet® system directs water flow to specific jet groups for the ultimate, personalized massage experience.

LIMELIGHT® COLLECTION



PRISM™

7 Seats
Lounge Seating
9'2" x 7'7" x 38"
279 cm x 231 cm x 97 cm
230 V



PULSE®

7 Seats
Open Seating
7'5" x 7'5" x 38"
226 cm x 226 cm x 97 cm
230 V



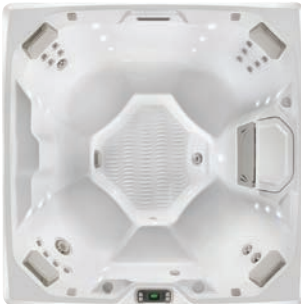
FLAIR®

6 Seats
Lounge Seating
7' x 7' x 36"
213 cm x 213 cm x 91 cm
230 V



FLASH™

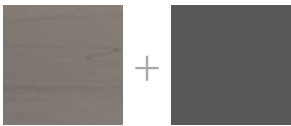
7 Seats
Open Seating
7' x 7' x 36"
213 cm x 213 cm x 91 cm
230 V



BEAM™

4 Seats
Open Seating
6' 8" x 6' 8" x 33"
203 cm x 203 cm x 84 cm
115 V or 230 V

CABINET COVER



Coastal Gray Slate



Sable Caramel



Espresso Chestnut

SHELL



Alpine White Ice Gray Platinum Tuscan Sun Desert



	Prism™	Pulse®	Flair®	Flash™	Beam™
Jets	73	49	43	41	19
Water Capacity	525 gal 1,990 L	445 gal 1,685 L	335 gal 1,270 L	360 gal 1,365 L	295 gal 1,115 L
Filled Weight	6,795 lb 3,085 kg	5,950 lb 2,700 kg	4,720 lb 2,140 kg	5,070 lb 2,300 kg	3,860 lb 1,750 kg
Entertainment	Optional	Optional	Optional	Optional	Optional
Lighting	Interior & Exterior	Interior & Exterior	Interior & Exterior	Interior & Exterior	Interior & Exterior
Circulation Pump	SilentFlo 5000®	SilentFlo 5000	SilentFlo 5000	SilentFlo 5000	SilentFlo 5000
Filtration	Dual Action	Dual Action	Dual Action	Dual Action	Dual Action
Insulation	FiberCor®	FiberCor	FiberCor	FiberCor	FiberCor
Water Care System	FreshWater® Salt System Ready	FreshWater Salt System Ready	FreshWater Salt System Ready	FreshWater Salt System Ready	FreshWater Salt System Ready



VISUALIZE THESE SPAS IN YOUR SPACE

Download the free Virtual View™ AR app and use augmented reality to see how a Hot Spring spa can transform your space.



HOT SPOT® COLLECTION

Quality, Performance, and Value. Maximize Your Every Day.

Eye-catching design, unique massage, and trusted quality from the industry leader. Hot Spot Collection spas help you maximize every day, for years to come.



FROG® @EASE® IN-LINE SANITIZING SYSTEM

Prefilled cartridges automatically release SmartChlor® sanitizer and minerals to keep water soft, clean, and clear with less effort.

FROG @ease is available in the U.S. only. FROG Serene® is available in Canada.



FIBERCOR® INSULATION AND ENERGY SMART®

Exclusive insulation fills the cabinet completely to a density four times greater than the half-pound foam used in most spas. Combined with Energy Smart features, this keeps water hot and energy costs low.



LEGENDARY PERFORMANCE

Backed by a decades-long reputation for outstanding quality and value, you can count on years of enjoyment and reliability.

HOT SPOT® COLLECTION

Eye-Catching Design

Each spa creates a dynamic backyard focal point with eye-catching finishes and distinctive design details. Subtly embossed cabinets give the look of natural materials yet provide the durability of advanced composites. Choose between three cabinet colors that can be combined with a variety of shell finishes to create a look that complements your home.

The large bartop offers plenty of space for cups, phones, or other items, while contoured seating and integrated pillows complement the overall aesthetic for an exciting look.

ACCENT LIGHTING

Multi-colored LED lights inside and out* accentuate the design of your spa. You set the mood with the option to choose one color or a revolving display.

**Exterior lighting not available on SX and TX models.*

FLOOR DRAIN

Convenient floor drains mean no bailing water when performing scheduled water changes.



COMPLETE MASSAGE EXPERIENCE

Value without compromise describes the Hot Spot® Collection. A variety of jet types, powered by our reliable Wavemaster® pump, work together with personalized control to deliver the massage experience that you expect from Hot Spring® spas.

EXCLUSIVE MOTO-MASSAGE® JET

The SX and TX models come with the Hot Spring Moto-Massage moving jet.

This exclusive, revolutionary jet produces a warm stream of water that sweeps up and down the length of your back for an unparalleled hydromassage experience.



HOT SPOT® COLLECTION



RHYTHM®

7 Seats
Open Seating
7' x 7' x 36"
213 cm x 213 cm x 92 cm
230 V



RELAY®

6 Seats
Lounge Seating
7' x 7' x 36"
213 cm x 213 cm x 92 cm
230 V



PACE™

5 Seats
Double Lounge Seating
6'10" x 6'10" x 33"
208 cm x 208 cm x 84 cm
115 V or 230 V



STRIDE®

3 Seats
Lounge Seating
7' x 5'5" x 29"
213 cm x 165 cm x 74 cm
115 V or 230 V



SX

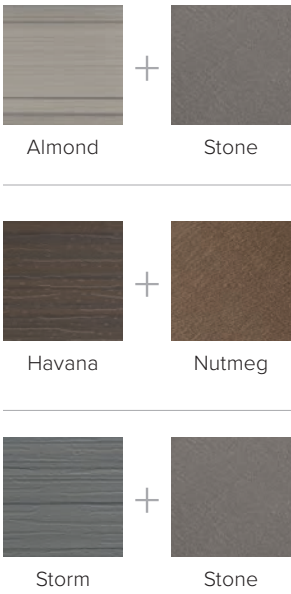
3 Seats
Open Seating
6' x 6'5" x 33"
183 cm x 196 cm x 84 cm
115 V or 230 V



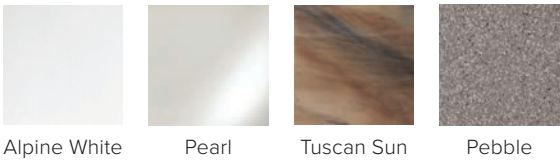
TX

2 Seats
Open Seating
6' x 6' x 29"
183 cm x 183 cm x 74 cm
115 V or 230 V

CABINET COVER



SHELL



	Rhythm®	Relay®	Pace™	Stride®	SX	TX
Jets	40	40	24	20	18 with Moto-Massage®	11 with Moto-Massage®
Water Capacity	330 gal 1,250 L	340 gal 1,290 L	300 gal 1,135 L	225 gal 850 L	230 gal 870 L	190 gal 720 L
Filled Weight	4,820 lb 2,185 kg	4,715 lb 2,140 kg	4,150 lb 1,880 kg	2,975 lb 1,350 kg	3,090 lb 1,400 kg	2,570 lb 1,165 kg
Entertainment	Optional	Optional	Optional			
Lighting	Interior & Exterior	Interior & Exterior	Interior & Exterior	Interior & Exterior	Interior	Interior
Circulation Pump					Optional SilentFlo 5000®*	Optional SilentFlo 5000®*
Filtration	Standard	Standard	Standard	Standard	Standard	Standard
Insulation	FiberCor®	FiberCor	FiberCor	FiberCor	FiberCor	FiberCor
Water Care System	FROG® @ease® In-Line Cartridge Ready	FROG @ease In-Line Cartridge Ready	FROG @ease In-Line Cartridge Ready	FROG @ease In-Line Cartridge Ready	FROG @ease In-Line Cartridge Ready	FROG @ease In-Line Cartridge Ready



VISUALIZE THESE SPAS IN YOUR SPACE

Download the free Virtual View™ AR app and use augmented reality to see how a Hot Spring spa can transform your space.



*Check with local dealer for availability.

A WARRANTY YOU CAN COUNT ON

We are passionate about making the world's best hot tubs and we stand behind them with robust and comprehensive warranties designed to give you peace of mind. Our warranties are our commitment to you, and we are proud to share them up front and in detail.

www.hotspring.com/warranty

	Highlife® Collection	Limelight® Collection	Hot Spot® Collection
No-Leak Shell	7 Years	7 Years	5 Years
Shell Surface	7 Years	5 Years	2 Years
Cabinet	5 Years	5 Years	2 Years
No-Leak Plumbing	5 Years	5 Years	2 Years
No-Fault® Heater	5 Years	5 Years	2 Years
Component Warranty	5 Years	5 Years	2 Years
Interior Light Assembly	2 Years	3 Years	2 Years
Wireless Remote Control Battery	1 Year		

COMPARE SPA COLLECTIONS

Benefit	Features	Highlife® Collection	Limelight® Collection	Hot Spot® Collection
Massage	Moto-Massage® DX	●		
	Moto-Massage			SX & TX
	Comfort Control®	●	●	●
	SmartJet® System	●	●	Pace™
Clean Water	100% No-Bypass Filtration	●		
	Tri-X® Filters	●		
	Dual-Action Filtration		●	
	FreshWater® Salt System Ready	●	●	
	FROG® @ease® In-Line Cartridge Ready*			●
Energy Efficiency	Multiple Layers of High Density Foam Insulation	●		
	FiberCor® Insulation		●	●
	Polymeric Base Pan and Substructure	●		
	Polyethylene Sealed Bottom		●	●
	SilentFlo 5000® Circulation Pump	●	●	Optional on SX & TX**
	Patented Pump Shroud	●	●	
	Titanium No-Fault® Heater	●	●	
	No-Fault Heater			●
	Custom-Fit Insulated Cover	●	●	●
Intuitive Control	Meets CEC and APSP Energy Efficiency Standards	●	●	●
	Wireless Touchscreen Control	●		
	Color LCD Control		●	
	LCD Control			●
Lighting & Entertainment	Diagnostic Logo Light	●	●	
	Customizable LED Zone Lighting	●		
	Multi-Color LED Lighting	●	●	●
	Exterior Lighting	●	●	All except SX & TX
	Wireless Entertainment	Optional	Optional	Optional except Stride®, SX, TX

*FROG @ease is available in the U.S. only. FROG Serene® is available in Canada.
**Check with local dealer for availability.

NECESSARIES®

Specifically designed for your Hot Spring spa, these additions make it easier to enjoy your spa more often and get the most out of your experience.



Cover Lifters

Our patented cover lifter systems make opening and closing the spa cover simple, helping maintain your hot tub and extending the life of your cover.

COVERCRADLE®

For the ultimate in ease, this robust system offers an ultra-smooth gliding mechanism and the power of dual pneumatic springs to support covers on even our largest spas.

Requires 24" minimum clearance.

COVERCRADLE® II

The CoverCradle II uses a single pneumatic spring optimized for lighter covers and smaller spas.

Requires 24" minimum clearance.

UPRITE®

Ideal for tight spaces and recessed spa installations, the Uprite system also provides an element of privacy by holding your folded cover in a vertical position.

Requires just 7" minimum clearance.

LIFT'N GLIDE®

The Lift'n Glide is easy to operate — simply lift the cover, glide it back, and enjoy.

Requires 14" minimum clearance.

Steps

Spa steps make it easier to get in and out of your hot tub and are available in a variety of options designed to match your Hot Spring spa.

HIGHLIFE® COLLECTION



LIMELIGHT® COLLECTION



HOT SPOT® COLLECTION



POLYMER



Spa Side Accessories

UMBRELLA

Shade your spa with the 360° rotatable spa side umbrella, featuring a 9'9" diameter canopy.

HANDRAIL

Our sturdy handrail is easy to reach when entering or exiting your spa. A battery-powered LED light adds illumination.

TOWEL TREE

Keep your towel off the ground and within reach.

Cooling System

COOLZONE™

With the CoolZone System, you can use your hot tub for a warm soak on a chilly evening, and a cool, revitalizing dip on a hot day. Or, for serious athletes, use it for cold-water therapy any time. Depending on ambient temperature, the system can also improve energy efficiency during normal operation by reducing the amount of time the No-Fault® heater operates. This can translate to additional energy cost savings.

Available on select Highlife and Limelight Collection models.



Entertainment

HIGH-QUALITY SOUND

On many models, an optional Bluetooth® music system can be added for streaming audio live or from your playlist. You can also add a subwoofer to select models for increased volume and richer bass tones.



PICTURE PERFECT

Add an all-weather, 22" HD wireless monitor to watch the game or your favorite shows. It offers excellent picture quality with 1080p screen resolution, tempered glass, and anti-reflective/anti-glare coating.



THE ABSOLUTE BEST HOT TUB OWNERSHIP EXPERIENCE®

HOT SPRING LEADS THE WAY

As the world's best-selling spa brand, Hot Spring earned its reputation for quality and innovation. But we don't stop there. Our focus is on providing *The Absolute Best Hot Tub Ownership Experience*® through unparalleled massage, worry-free water care, energy-saving features and unmatched customer care. With a Hot Spring spa, you can relax today, tomorrow and long after your purchase.

45+ Years of Excellence | 1.8 Million Spas Sold | 50 States 70 Countries

THE BEST RETAILER PARTNERS

Our group of authorized Hot Spring dealers provide unparalleled customer care as you shop for, purchase, and enjoy your new hot tub. With sales and service centers located worldwide, we have the most extensive support network in the industry.

A BRAND YOU CAN TRUST

For more than 45 years, we've built our reputation on quality and have earned TradeCertified™ certification for providing a superior ownership experience every year since the award's inception in 2005.



Hot Spring Spas is a brand of Watkins Wellness, the leader in hot tub and aquatic fitness products. Watkins Wellness is part of MASCO Corporation, a Fortune 500 company whose family of quality home products includes:



You don't have to take our word for it. See what real Hot Spring owners are saying at hotspring.com/reviews



COMMUNITY


Join our community of Hot Spring® spa owners for ideas, perspectives, personal results, and more. Connect with our social channels and immerse yourself in our world.

Visit our website:
hotspring.com

Follow us on social media:

 @HotSpringSpas

 @HotSpringSpas

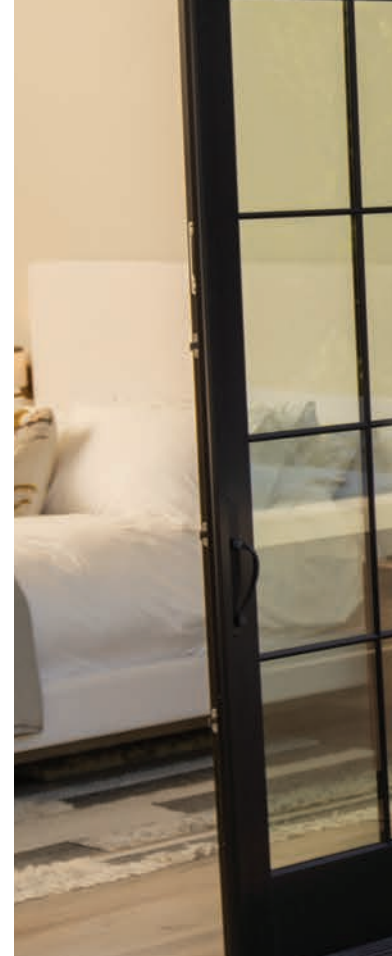
 @hotspring_spas

 /hotspringspas



We print our brochures on only Forest Stewardship Council (FSC) paper. Printed in the USA on recycled paper that contains 10% post-consumer waste and is FSC certified. FSC ensures that the paper in our brochures contains fiber from well-managed and responsibly harvested forests. Please pass this catalog on or recycle again.





©2023 Watkins Wellness, 1280 Park Center Drive, Vista, California 92081. All rights reserved. Specifications, colors, and surface materials subject to change without notice. Not all features are available on all products. Printed in USA. ACE®, Accolade®, Aria®, BellaFontana® water feature, Beam™, Bolt®, Built for a Lifetime of Relaxation®, Clarion®, Classic® Series, Clean Screen®, Comfort Control® system, CoverCradle®, Connexion®, CoolZone™, Dash®, DeTECHtive®, DreamJet®, Earth Smart® spa, ELMWood®, Energy Smart® spa, Envoy®, EverFresh®, Everwood® Cabinet, Every Day Made Better®, Feel good. Live Well®, FiberCor®, Flair®, Flash™, FootWell® System, Fresh Start Pro®, Fresh Water®, FreshStart®, FreshStart® 10,000 Pre-filter, Ag+® FreshWater, FRESHWATER®, Gleam®, GlideRite®, Glow®, Grandee, Highlife®, Hot Spot®, Hot Spring®, HotSpring®, HydroPulse®, HydroStream® jet, Illuminate the Possibilities®, IQ 2020®, I'm a Hot Tubber®, Jetsetter®, JetStream® jet, La Palma®, Landmark®, Lift 'n Glide®, Limelight®, Luminescence® LED light system, Mallorca®, Moto-Massage® jet, MPScents®, Necessaries®, Nobody Backs You Better®, No-Fault®, Pace™, Precision® jet, Prism™, Prodigy®, Pulse®, Quartet® jet system, Raio®, Relax and let your spa take care of itself®, Relay®, Rhythm®, Serenity Made Simple®, Silent Flo 5000®, SilentRunning® technology, SmartJet® System, Solana®, Solutions Through Technology®, Soothing Seven® jets, SoothingStream® water feature, Sorrento®, Sovereign®, SpaStone®, Splendors®, Spring®, Sprint®, Step Into It®, Stride®, Strobe™, SureWood®, Tech Talk®, Tempo®, The Absolute Best Hot Tub Ownership Experience®, The Next Great American Appliance®, The World's Greatest UnderWater Symphony®, Tiger River®, Tobago®, Trinidad®, Triumph™, Tri-X® filter, UpRite®, Vanguard®, Vanishing Act®, Vidro®, Vista®, Watkins The Home Relaxation Specialists®, Watkins Direct™, WaveMaster®, Watkins Wellness®, Virtual View™ are trademarks of Watkins Manufacturing Corporation. Delta is a registered trademark of Delta Faucet Company. Behr is a registered trademark of Behr Process Corporation. Hansgrohe is a registered trademark of Hansgrohe SE. Bluetooth is a registered trademark of the Bluetooth Special Interest Group (SIG). FROG and @ease are registered trademarks of King Technologies. All other marks are property of their respective owners. All 230 V models must be installed by a licensed electrician in accordance with local codes. United States Patents #5,647,736, #5,724,478; #5,810,257; #5,810,262; #5,819,332; #5,924,850; #6,080,973, #6,195,811; #6,324,707, #6,381,766B1; #6,435,691; #6,596,951; #6,621,985; #6,859,952; #6,873,793; #6,976,636; #7,162,752; #7,254,847, #7,219,690; #7,472,430; #7,472,431; #7,698,754, #8,273,254; #8,266,736; #8,465,650; #8,688,280; #8,838,280; D431297, D496107, D518896; D531729; D611612; D620599; D620600; D621947; D624657; D634019; D634020; D634021, D643538, D755401 and other patents pending.

